

4 BEDROOMS

 LIMASSOL GREENS

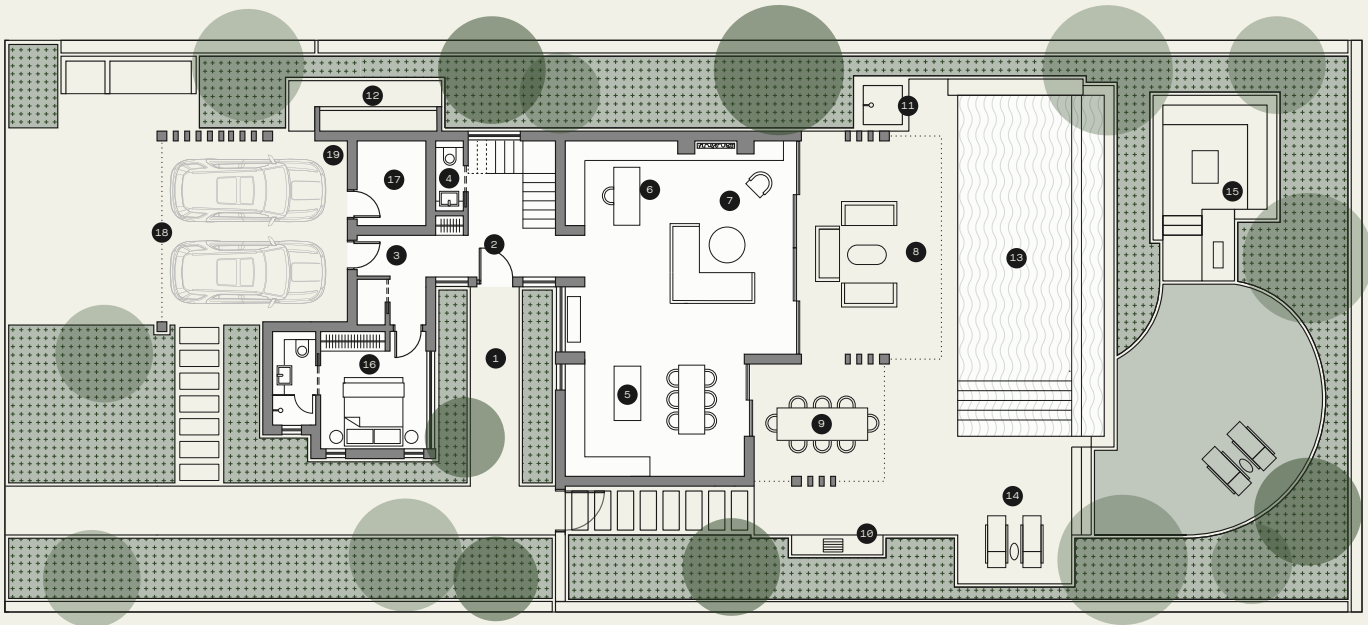
KINGFISHER



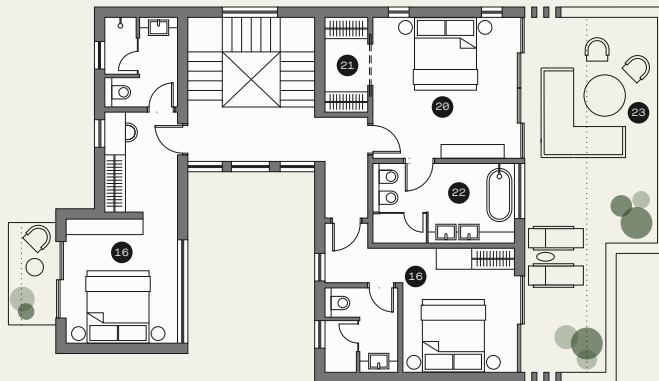
HIGHLIGHTS

- Large plot with breath-taking golf course and lake views
- All bedrooms are ensuite. Principal suite with dedicated dressing room and bathroom with his & hers vanity.
- Staff bedroom & bathroom
- Eco-friendly design featuring double glazing, solar panels, provision for electric vehicle charging
- High Ceilings. Wide and tall window and door openings
- High standard kitchen cabinets/ wardrobes/sanitary ware from European brands. Security and fireproof entrance door
- VRV air cooling system & under floor heating.
- Home automations (smart-home technology) – optional upgrades available

GROUND FLOOR



FIRST FLOOR



AREAS

01	Entrance courtyard	12	Water feature
02	Entrance hall	13	Swimming pool
03	Secondary entrance through car park	14	Swimming pool terrace
04	Powder room	15	Outdoor living/firepit
05	Kitchen and dining	16	Bedroom with ensuite
06	Study/flexible space	17	Technical room
07	Lounge/living room	18	Covered parking (pergola)
08	Lounge terrace and outdoor dining	19	Provision for electric vehicle charger
09	Outdoor dining	20	Principal suite
10	Barbeque area	21	Dressing room
11	Outdoor shower	22	Principal suite bathroom
		23	Principal suite terrace

Plot size	754m ²
Internal covered area	228m ²
Covered terraces	52m ²
Covered terraces (pergola)	22m ²
Covered parking (pergola)	32m ² (2 cars)
Uncovered terraces	43m ²
Swimming pool	45m ²
Principal suites	1
Bedrooms	3
Ensuites	4

The areas are indicative for this Villa type and may vary according to the plot.