

4+1 BEDROOMS

 LIMASSOL GREENS

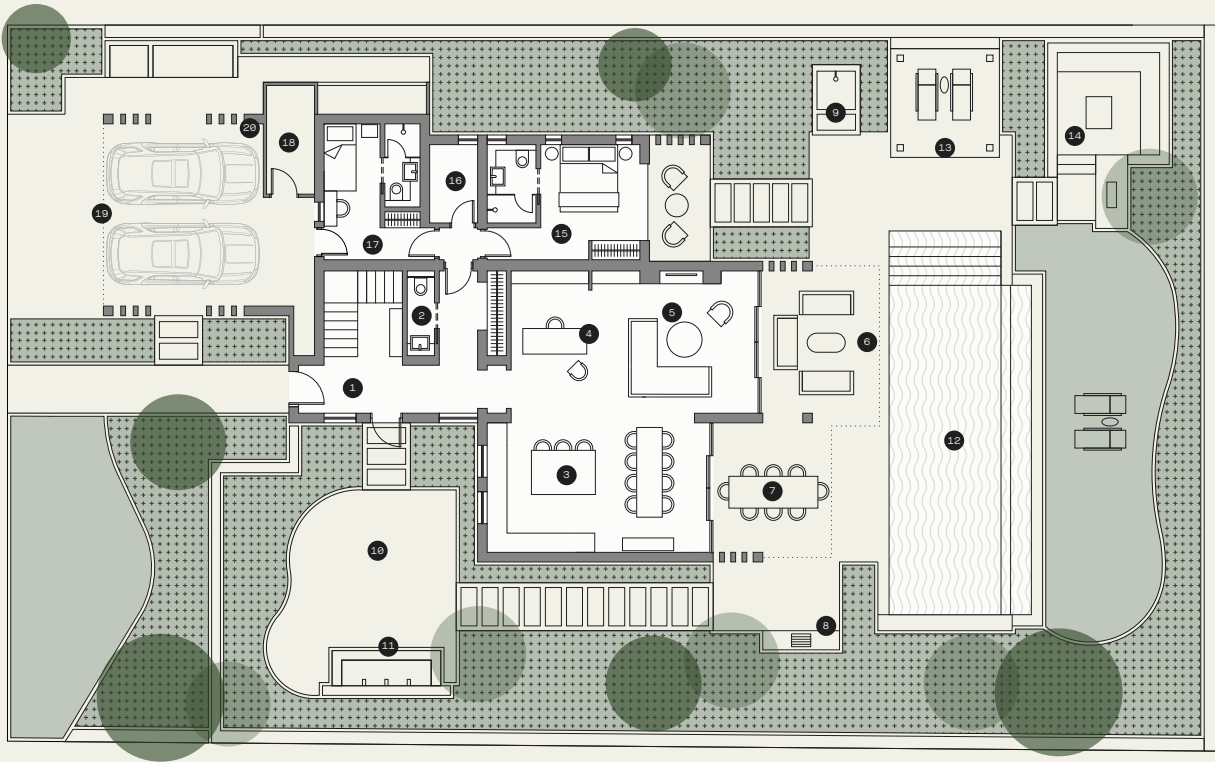
LAPWING



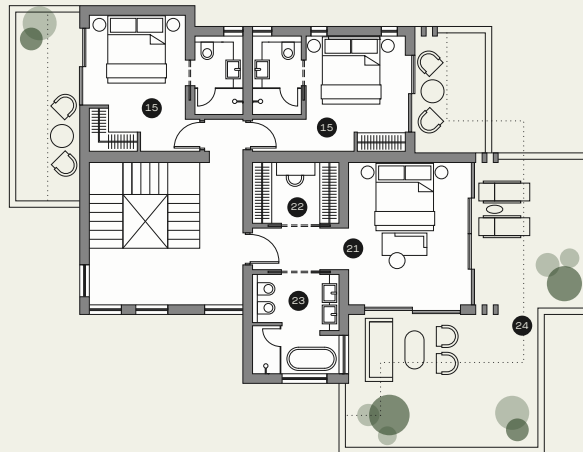
HIGHLIGHTS

- Large plot with breath-taking golf course and lake views
- All bedrooms are ensuite. Principal suite with dedicated dressing room and bathroom with his & hers vanity.
- Staff bedroom & bathroom
- Eco-friendly design featuring double glazing, solar panels, provision for electric vehicle charging
- High Ceilings. Wide and tall window and door openings
- High standard kitchen cabinets/ wardrobes/sanitary ware from European brands. Security and fireproof entrance door
- VRV air cooling system & under floor heating.
- Home automations (smart-home technology) – optional upgrades available

GROUND FLOOR



FIRST FLOOR



AREAS

01 Entrance hall	13 Swimming pool terrace	Plot size	823m ²
02 Powder room	14 Outdoor living/firepit	Internal covered area	248m ²
03 Kitchen and dining	15 Bedroom with ensuite	Covered terraces	57m ²
04 Study/flexible space	16 Laundry/storage	Covered terraces (pergola)	9m ²
05 Lounge/living room	17 Staff bedroom & bathroom	Covered parking (pergola)	33m ² (2 cars)
06 Lounge terrace & outdoor dining	18 Technical room	Uncovered terraces	88m ²
07 Outdoor dining	19 Covered parking (pergola)	Swimming pool	55m ²
08 Barbeque area	20 Provision for electric vehicle charger	Principal suites	1
09 Outdoor shower	21 Principal suite	Bedrooms	3
10 Courtyard garden	22 Dressing room	Ensuites	4
11 Water feature	23 Principal suite bathroom	Staff Bedroom & Bathroom	1
12 Swimming pool	24 Principal suite terrace		

The areas are indicative for this Villa type and may vary according to the plot.