

2 BEDROOMS

 LIMASSOL GREENS

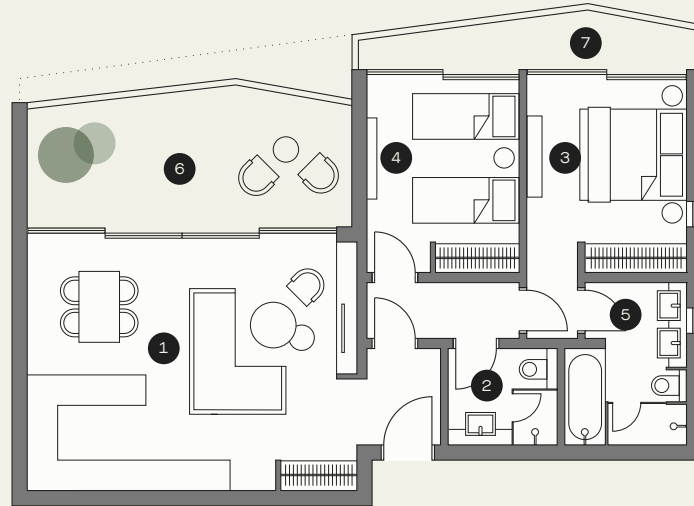
# ROBIN APARTMENTS



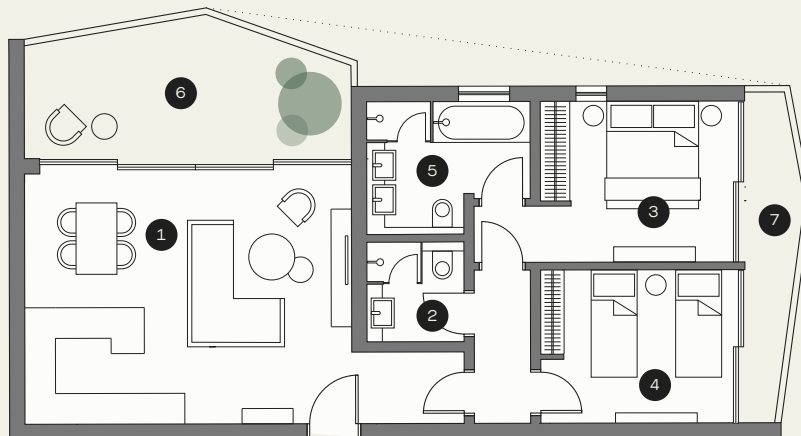
## HIGHLIGHTS

- Principal suite with dedicated dressing bathroom with his & hers vanity.
- Eco-friendly design featuring double glazing, solar panels.
- High Ceilings. Wide and tall window and door openings
- High standard kitchen cabinets/ wardrobes/sanitary ware from European brands. Security and fireproof entrance door
- VRV air cooling system & under floor heating.
- Home automations (smart-home technology) – optional upgrades available.

## TYPE A



## TYPE B



## AREAS

- 01 Kitchen/Dining/Living room
- 02 Powder room
- 03 Principal Suite
- 04 Bedroom
- 05 Ensuite Bathroom
- 06 Terrace
- 07 Bedroom terrace

Internal covered area	88 - 90m <sup>2</sup>
Covered terraces	25 - 27m <sup>2</sup>
Common areas	15m <sup>2</sup>
Storage room (basement)	5m <sup>2</sup>
Covered Parking (basement)	15m <sup>2</sup> (1 Car)
Principal suites	1
Bedrooms	1
Ensuites	1

The areas are indicative for this Villa type and may vary according to the plot.