

3 BEDROOMS

 LIMASSOL GREENS

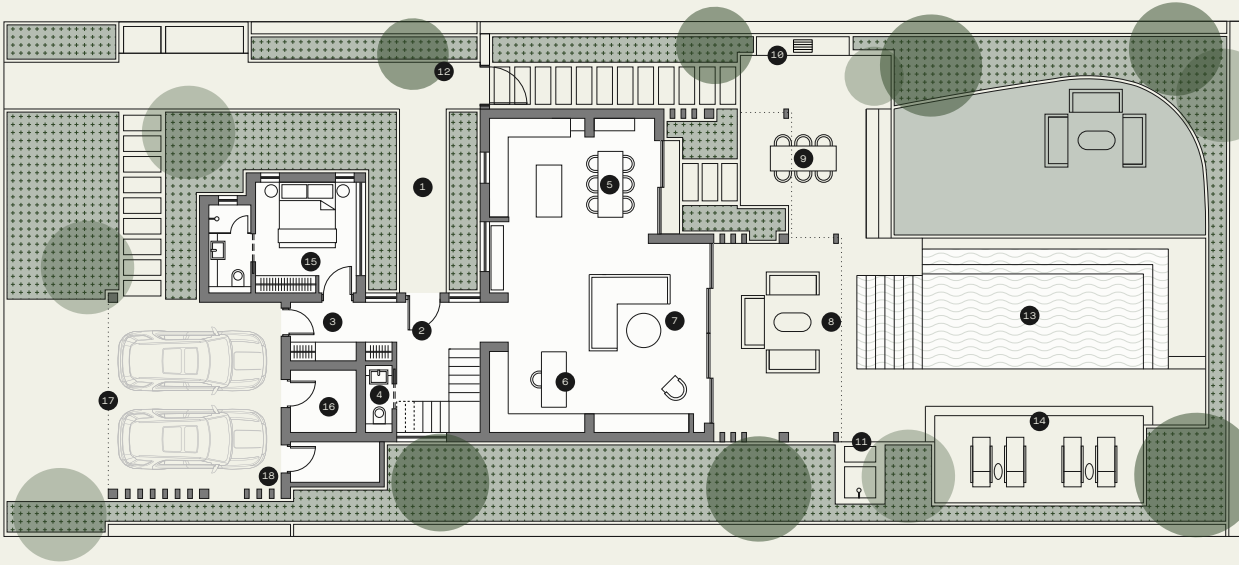
SKYLARK



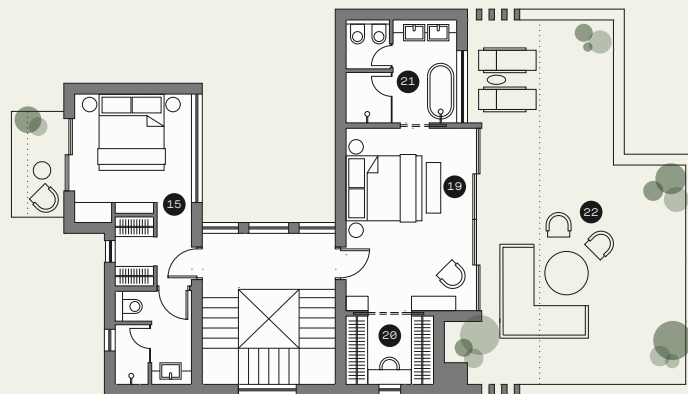
HIGHLIGHTS

- Large plot
- All bedrooms are ensuite. Principal suite with dedicated dressing room and bathroom with his & hers vanity.
- Eco-friendly design featuring double glazing, solar panels, provision for electric vehicle charging
- High Ceilings. Wide and tall window and door openings
- [State of the art finishes]
- High standard kitchen cabinets/ wardrobes/sanitary ware from European brands. Security and fireproof entrance door
- VRV air cooling system & under floor heating.
- Home automations (smart-home technology) – optional upgrades available.

GROUND FLOOR



FIRST FLOOR



AREAS

01	Entrance courtyard	12	Water feature
02	Entrance hall	13	Swimming pool
03	Secondary entrance through car park	14	Swimming pool terrace
04	Powder room	15	Bedroom with ensuite
05	Kitchen and dining	16	Technical room
06	Study/flexible space	17	Covered parking (pergola)
07	Lounge/living room	18	Provision for electric vehicle charger
08	Lounge terrace and outdoor dining	19	Principal suite
09	Outdoor dining	20	Dressing room
10	Barbeque area	21	Principal suite bathroom
11	Outdoor shower	22	Principal suite terrace

Plot size	657m ²
Internal covered area	195m ²
Covered terraces	52m ²
Covered terraces (pergola)	12m ²
Covered parking (pergola)	33m ² (2 cars)
Uncovered terraces	95m ²
Swimming pool	31m ²
Principal suites	1
Bedrooms	2
Ensuites	3

The areas are indicative for this Villa type and may vary according to the plot.