

3 BEDROOMS

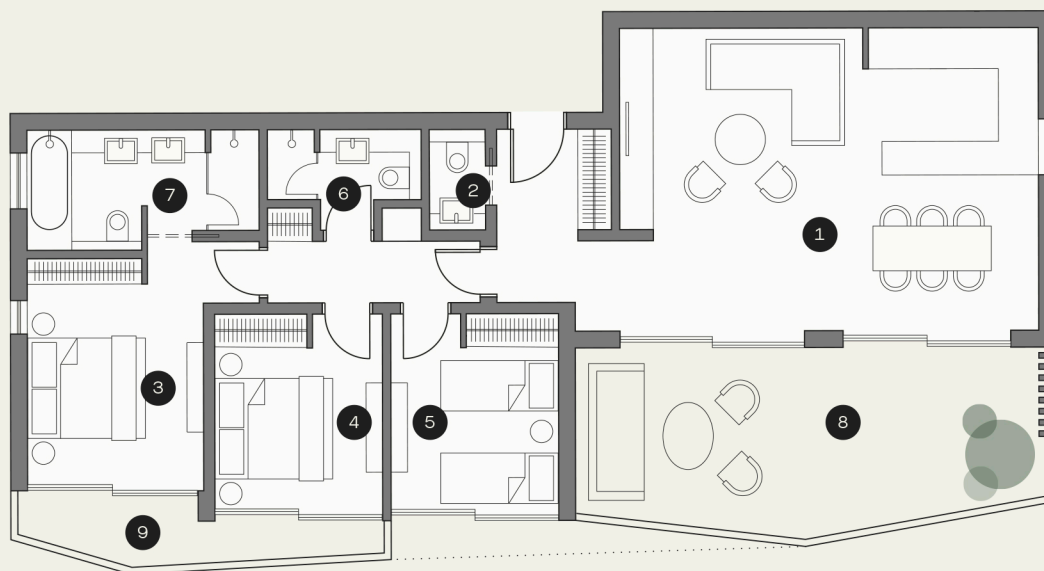
 LIMASSOL GREENS

# ROBIN APARTMENTS



## HIGHLIGHTS

- Principal suite with dedicated dressing bathroom with his & hers vanity.
- Eco-friendly design featuring double glazing, solar panels.
- High Ceilings. Wide and tall window and door openings
- High standard kitchen cabinets/ wardrobes/sanitary ware from European brands. Security and fireproof entrance door
- VRV air cooling system & under floor heating.
- Home automations (smart-home technology) – optional upgrades available.



## AREAS

- 01 Kitchen/Dining/Living room
- 02 Powder room
- 03 Principal Suite
- 04 Bedroom
- 05 Bedroom
- 06 Bathroom
- 07 Ensuite Bathroom
- 08 Terrace
- 09 Bedroom Terrace

Internal covered area	122m <sup>2</sup>
Covered terraces	32 - 36m <sup>2</sup>
Covered areas	31m <sup>2</sup>
Storage room (basement)	5m <sup>2</sup>
Covered Parking (basement)	15m <sup>2</sup> (1Car)
Principal suites	1
Bedrooms	2
Ensuites	3

The areas are indicative for this Apartment Type and may vary according to the plot.