

3 BEDROOMS

 LIMASSOL GREENS

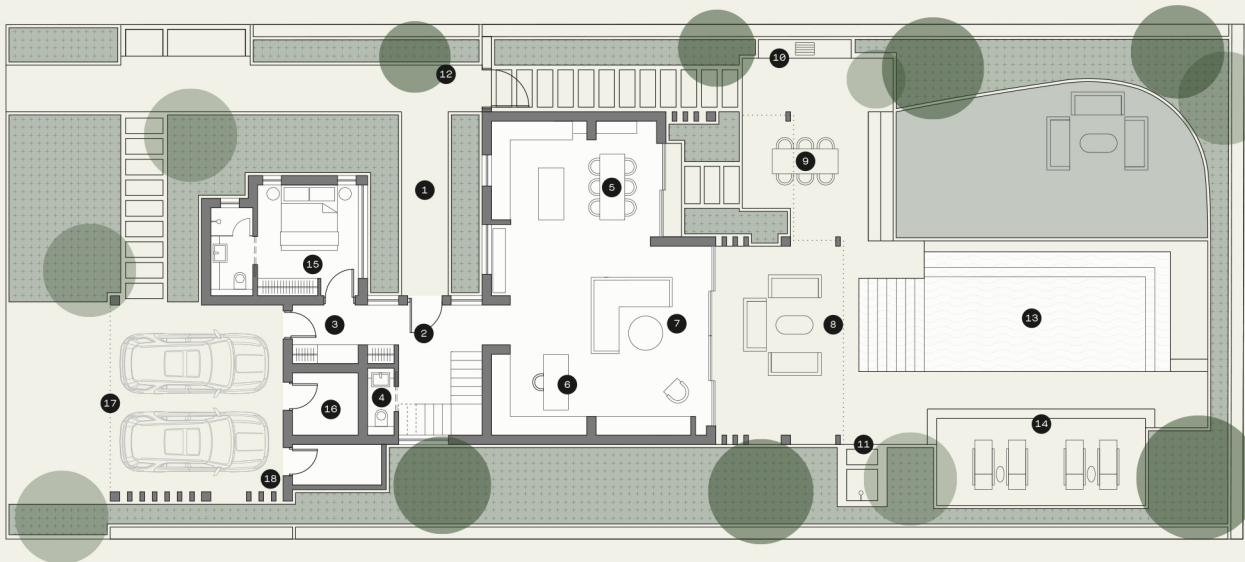
SKYLARK



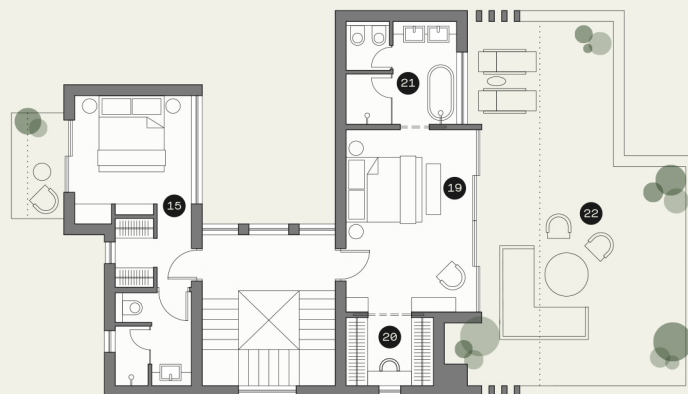
HIGHLIGHTS

- Large plot
- All bedrooms are ensuite. Principal suite with dedicated dressing room and bathroom with his & hers vanity.
- Eco-friendly design featuring double glazing, solar panels, provision for electric vehicle charging
- High Ceilings. Wide and tall window and door openings
- [State of the art finishes]
- High standard kitchen cabinets/ wardrobes/sanitary ware from European brands. Security and fireproof entrance door
- VRV air cooling system & under floor heating.
- Home automations (smart-home technology) – optional upgrades available.

GROUND FLOOR



FIRST FLOOR



AREAS

01 Entrance courtyard	12 Water feature	Plot size	657m ²
02 Entrance hall	13 Swimming pool	Internal covered area	196m ²
03 Secondary entrance through car park	14 Swimming pool terrace	Covered terraces	51m ²
04 Powder room	15 Bedroom with ensuite	Covered terraces (pergola)	16m ²
05 Kitchen and dining	16 Technical room	Covered parking (pergola)	33m ² (2 cars)
06 Study/flexible space	17 Covered parking (pergola)	Uncovered terraces	104m ²
07 Lounge/living room	18 Provision for electric vehicle charger	Swimming pool	37m ²
08 Lounge terrace and outdoor dining	19 Principal suite	Principal suites	1
09 Outdoor dining	20 Dressing room	Bedrooms	2
10 Barbeque area	21 Principal suite bathroom	Ensuites	3
11 Outdoor shower	22 Principal suite terrace		

The areas are indicative for this Villa type and may vary according to the plot.